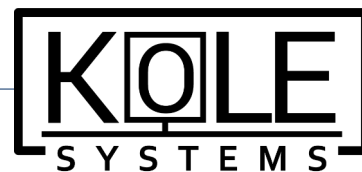


# DISTRIBUTION BOXES

Metal electrical enclosures



## Multimedia BOX MM 18

# DISTRIBUTION BOXES

Metal electrical enclosures



## Application area

Multimedia box MM 18 distribution panels are applied in various industries, in energy distribution sector for residential, commercial, office centers, smart installation, audio installation, internet distribution .

They are used for switching, protection and power distribution circuit breakers installation, smart control devices, internet modems and switches, audio devices and other devices.

### Technical data:

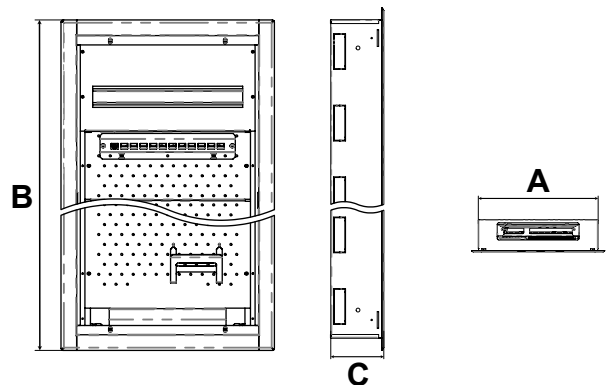
- Degree of protection: IP30
- Rated current: In: 125A
- Rated voltage: Un: 230/400V, 50Hz
- Rated insulation voltage: Ui: 500 V
- Protection against external mechanical impact: IK07
- Ambient temperature: -5°C- + 40°C
- Insulation class: I
- Material: metal 1 mm thick with protective coating
- Color: RAL9003



## Series MM-18

Internal boxes install 18 modules on a single DIN rail.

Type / Number of rows	Weight	Modules	Dimensions (mm)		
			A	B	C
MM-3/18	9	36	417	634	112
MM-4/18e	11	54	417	784	112
MM-5/36e	13	72	417	934	112
MM-6/54e	15	90	417	1084	112



MM-3/18

MM-4/18e(expandable to 36M)

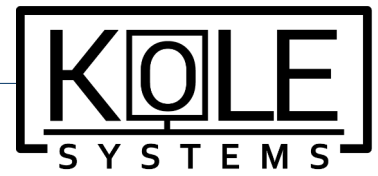
MM-5/36e (expandable)

MM-6/54e (expandable to 72M)



# DISTRIBUTION BOXES

Metal electrical enclosures



## Design Description

MM multimedia boxes entirely from sturdy metal and comprise the following components:

**Bottom:** Ensures the boxes remain stable and secure on the wall, preventing any twisting or turning.

Mounting frame that holds DIN rails and mounting plates. There is 20mm of space below DIN rails, for cable placement

There are two mounting plates. One 150mm height is replaceable and second one with 304mm height is fixed with the holder for 3 sockets, that can be used for powering the devices placed on mounting plate. Sockets are not part of the box, need to be purchased separately.

Mounting plate has one modem holder and RJ45 patch panel for 12xRJ45 sockets

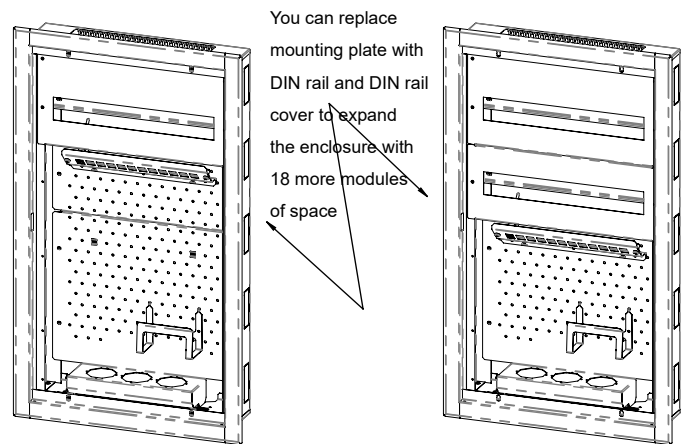
All our boxes are 1mm thick metal and each part is powder-coated for corrosion protection.

The doors are versatile and can be used on either the left or right side, they have additional perforation for heat dissipation and signal distribution.

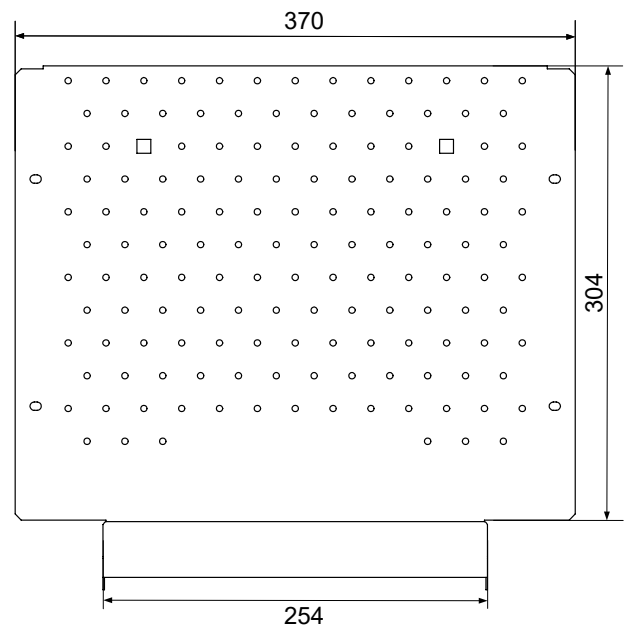
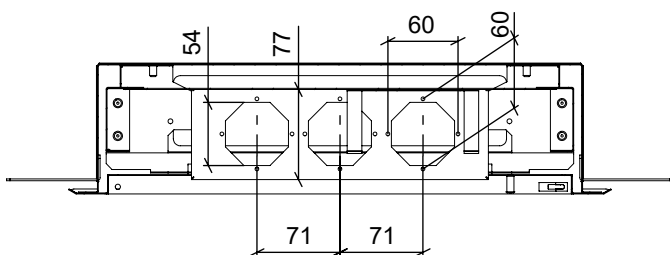
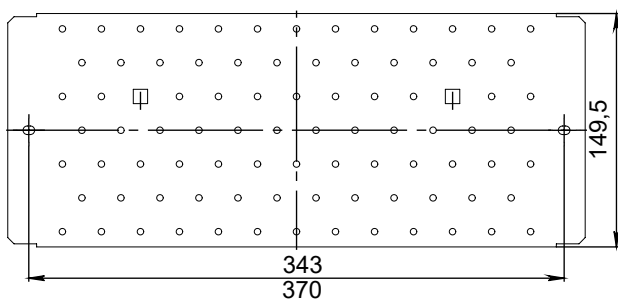
The door key is available as accessory.



## How to expand our multimedia boxes

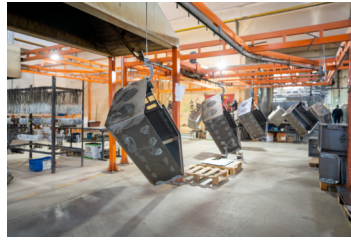


## Dimensions



# DISTRIBUTION BOXES

Metal electrical enclosures



Contact us

[info@kole-systems.com](mailto:info@kole-systems.com)

[www.kole-systems.com](http://www.kole-systems.com)

