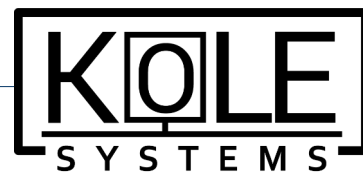


# DISTRIBUTION BOXES

Metal electrical enclosures

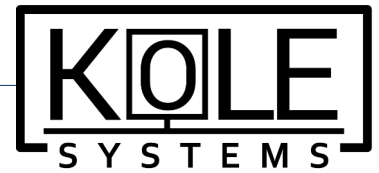


## SiBOX Series

---

# DISTRIBUTION BOXES

Metal electrical enclosures



## Design Description

- The electric enclosure boxes are constructed from top-quality metal and incorporate precise locks design, high-strength hinges, sealing strips, and an IP65 protection rating.
- Special construction of metal distribution panels ensures that electrical equipment and power cords remain protected against the impact of adverse weather conditions, liquid and corrosion.
- We offer various enclosure configurations to fulfill the specific requirements of our customers.



Internal devices protection from the influence of any natural forces

Dust

Rain

UV

Snow



Strong tightness



High hardness



Corrosion resistance

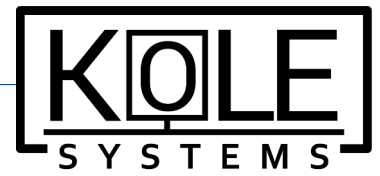


## Main Description

- Sturdy Metal Constructions - made of 1.2 mm cold rolled metal, precision cut and laserwelded and have highly durable structure and keep internal electrical equipments well protected in harsh environments.
- Grade IP65 is ensured by sealing strip of plastic rubber that has excellent waterproof and dust proof performance. Often used for industrial, commercial and private buildings.
- Safety of enclosures is increased by specially designed high strength resistance door, reinforced lock and quality hinges.
- Design is improved by the bottom outlet to facilitate voltage distribution.
- Electrical enclosures are equipped with galvanized mounting backplate for easy installation of all internal devices.
- The accessory kit includes the four of specialized hooks along with all necessary attachments, simplify the wall-mounting procedure for the panels.

# DISTRIBUTION BOXES

Metal electrical enclosures



## Application area

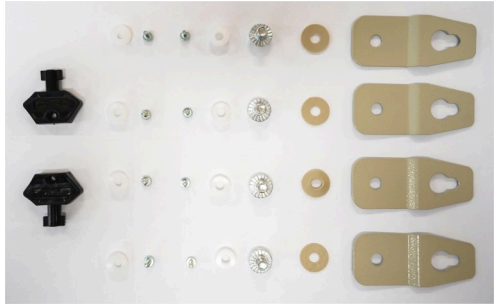
- The SiBOX series of electrotechnical panels offers an optimal solution to enhance the safety and stability of electrical systems in various environments, including industrial settings, workshops, offices, and residential centers.
- Metal distribution boxes are designed for both on-wall and built-in installations, providing switching, protection and power distribution circuit breakers installation.

## Technical data

- Waterproof grade: IP65
- Rated current: In: 125A
- Rated voltage: Un: 230/400V, 50Hz
- Rated insulation voltage: Ui: 500 V
- Protection against external mechanical impact: IK07
- Ambient temperature: -5°C- + 40°C
- Insulation class: I
- Material: metal 1.2 mm thick with protective coating
- Color: RAL7035

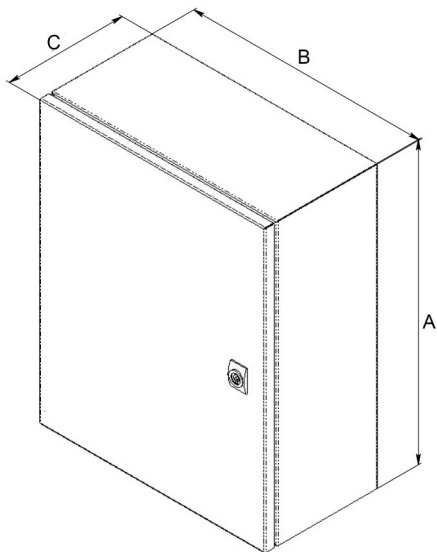


## The accessory kit



## Series SiBOX

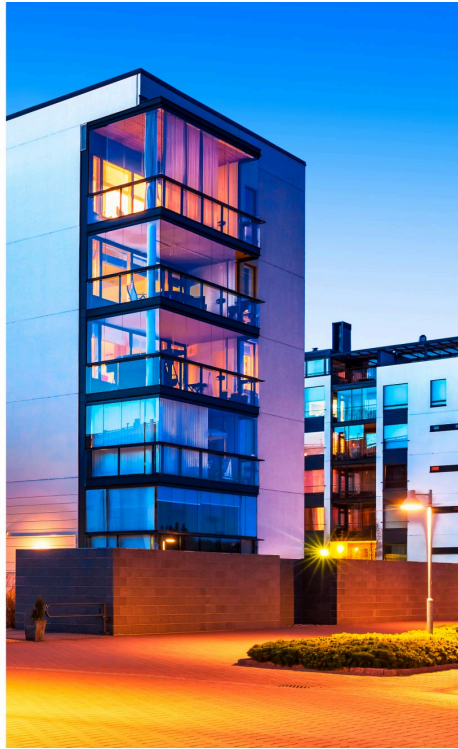
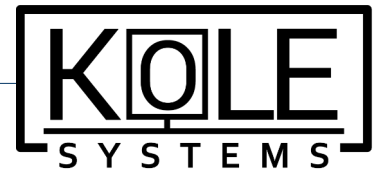
Type	Weight	Dimensions (mm)		
		A	B	C
2,5,2,1,4	2.5	250	200	140
3,2,5,1,4	3.3	300	250	140
3,3,1,4	3.8	300	300	140
3,2,5,2	3.7	300	250	200
3,3,2	4.3	300	300	200
4,3,2	5.4	400	300	200
4,4,2	6.7	400	400	200
5,4,2	8.1	500	400	200
6,4,2	9.5	600	400	200
6,4,2,6	10.2	600	400	260
6,5,2	12.9	600	500	200
6,5,2,6	13.9	600	500	260
7,5,2,6	15.9	700	500	260
8,6,2,6	24.2	800	600	260
10,6,2,6	29.4	1000	600	260
10,8,3,2	39.5	1000	800	320
12,8,3,2	46.3	1200	800	320





# DISTRIBUTION BOXES

Metal electrical enclosures



## Contact us

[info@kole-systems.com](mailto:info@kole-systems.com)

[www.kole-systems.com](http://www.kole-systems.com)

